

Clipper Office Tester



- Accurate, dependable performance for small lot cleaning, testing, or sampling
- Tabletop design is small, yet accurate
- Compact and easy to move
- Used in seed plants for sampling large lots
- Popular with vegetable and flower growers and in seed stores for specialized cleaning, grading, and sizing
- Many laboratory uses
- Scalper and sifter screens are standard with over 150 sizes to choose from
- Shoe uses two 10" x 15" screens, one for the top and the other for the lower separation area
- Optional removable catchall performs as an air screening receptacle with removable tray
- Powerful bottom blast fan driven by a three-step pulley
- Adjustable slide on the air intake openings provide intermediate air regulation



SINCE 1869

1440 SOUTH ADAMS STREET, BLUFFTON, IN 46714 USA (260) 824-3400 (800) 248-8318 FAX (260) 824-5463

info@atferrell.com

www.clipperseparation.com

THE OFFICE TESTER

MANUAL AND PARTS

MOTOR & INVERTER POLICY

(Baldor)

Clipper uses quality motors and controllers in all of our machines. In spite of this, problems sometimes arise because of power surges, improper wiring and manufacture defects. If you should have a problem during installation or production, please go to the following web site to find the service center closest to you. Please have the following information ready when you call:

1. What is the model and serial number of the unit
(have your manual with you if it is a controller)
2. When was the unit installed?
3. What voltage is being supplied to the unit and if you have had problems with other motors and/or controllers in your operation?
4. What symptoms are your unit showing?
5. What default codes are showing if your unit has this feature?

www.baldor.com

go to support

go to service center at left hand

pick motor or electronics

choose State / Providence / Country

WARRANTY

The A. T. Ferrell Company Inc. Manufacturers Warranty for the following product:

CLIPPER

Air Screen Cleaners, Seed Cleaners, Grain Cleaners, Scalpers, Vibratory Conveyers, Debearders, Laboratory Cleaners, Graders, E-Z Down Ladders, Roll Feeders, Vibratory Feeders, Loss in Weight Feeders, Augers, Bucket Elevators, Mixers and Blenders.

("CLIPPER" IS A REGISTERED TRADEMARK OF THE A. T. FERRELL COMPANY INC.)

The A. T. Ferrell Company Inc. hereby warrants each new product (other than Clipper Screens, a "Clipper Product") to be free from defects in Material and workmanship for a period of one (1) year from the date of shipment. The A. T. Ferrell Company Inc. will replace without charge any Clipper Product or part or component thereof, which is defective in material or workmanship (other than transportation charges, which shall be borne by the purchaser/user), if notified in writing of such defect by the purchaser/user within such period. The A. T. Ferrell Company Inc. liability for defective parts and components not manufactured by The A. T. Ferrell Company Inc. but included in the Clipper Products (such as electric motors, DC controllers and belts) is necessarily limited to the warranty or guarantee provided by the manufacturer or supplier of such parts or components. The A. T. Ferrell Company Inc. reserves the right to require the purchaser/user to return the defective Clipper Product or part or component thereof to The A. T. Ferrell Company Inc. factory for inspection, as well as the right to determine the validity of any warranty claim in its sole discretion.

This warranty shall not apply and shall be void under the following conditions:

1. The Clipper Product has not been purchased from The A. T. Ferrell Company Inc. or an authorized representative of The A. T. Ferrell Company Inc.
2. The Clipper Product has been removed from its original installation site.
3. Any part of the Clipper Product has been altered, modified, or changed, except by The A. T. Ferrell Company Inc. or with The A. T. Ferrell Company Inc. written authorization.
4. Attachments or devices unsuitable to the Clipper Product have been used on or in conjunction with it.
5. The Clipper Product has not been installed, used, operated, handled, or serviced in accordance with the applicable instruction manual.
6. The Clipper Product is a replacement part or component, which is installed in a previously sold (used) piece of equipment.

The A. T. Ferrell Company Inc. reserves the right to make changes in design or improvements in its products without obligation whatsoever to prior Purchaser-User of such products.

The A. T. Ferrell Company Inc. will pass on to a Purchaser-User only such warranty as it shall receive on products or components not of its manufactured from the manufacturer or supplier thereof.

This warranty is expressly in lieu of any other express or implied warranties, including any implied warranty of merchantability, of fitness and of any other obligation on the part of The A. T. Ferrell Company Inc. and may not be altered, modified, or changed in any way except in writing by an officer of The A. T. Ferrell Company Inc.

The A. T. Ferrell Company Inc. shall not be liable for any loss or damage directly or indirectly arising from the use of its products or otherwise, or for any special or consequential damages of any nature.

CLIPPER OFFICE TESTER OPERATING INSTRUCTIONS

1. Mount feed hopper on top of cleaner. The Hopper will slide into place just under the angled portion of the Hopper stop.
2. Select the (2) screens appropriate for the commodity to be cleaned/separated. Usually, two screens will already be in place in the Office Tester. First place the bottom screen in the lower angled slides, the blank portion of the screen should be towards the slide-in side. Place the independent bottom screen blank directly behind the bottom screen. Next, slide the top screen in the top slides. The spring hook should finally be positioned to hold both screens in place.
3. The upper screen should be just large enough to allow the good seed to pass through, scalping off large trash. The lower screen should hold up the good seed, sifting out dirt, small weed seeds, shrunken or undersized seeds and other small trash.
5. Open the hopper gate allowing seed to feed onto the top screen. Adjust the feed so the good seed falls through the first one-half of this screen.
6. Adjust the Blast Fan with the side Slide Plates to blow out lightweight trash. A few good seeds blown out with the trash indicate an appropriate air setting. The three-step pulleys can be adjusted to facilitate extra fan RPM

Maintenance

There are small oil holes in the following areas. Add a couple of drops of light weight oil every 50 hours of run time

Top of the two wood bearing that hold the bottom fan shaft

Top of the wood eccentric bearing that pushes the shoe back and forth

SCREEN SUGGESTIONS FOR COMMERCIAL CLEANING

UPDATED MARCH 19, 2020

COMMODITY	TOP SCREEN	BOTTOM SCREEN
GRASS SEED		
Alkaligrass	22x22	44x44
Bahigrass, Argentina	1/16x1/2	1/13
Bahigrass, Common	1/14x1/2	1/15
Bahigrass, Pensacola	1/18x1/2	1/17
Bentgrass	28x28, 32x32	60x60
Bermudagrass, unhulled	6x24	6x38
Bermudagrass, hulled	28x28	6x40
Bluegrass, KY-Scalped	1/18, 24x24	6x40
Bluegrass, Marion Scalped	1/16, 20x20	6x40
Blue Panic	16x16	6x34
Bromegrass, smooth	1/13x1/2	6x24, 10 Tri
Buffalograss	17	1/16x1/2
Canarygrass, Reeds	3/64x5/16	1/16
Canarygrass, Moroccan	1/14x1/2	1/14, 1/13
Carpetgrass	6x22	6x40
Centipede	1/16	26x26
Dallisgrass	7, 3/64x5/16	1/14
Fescue, Alta, Chowings KY 31 or Meadow	1/22x1/2	6x32
THREE SCALPING SCREENS Fescue, Creeping Red	1/24x1/2	6x32
Guineagrass	1/18x1/2	6x28
Harding Grass	1/18x1/2	6x28
Johnsongrass	1/13x1/2	1/16, 1/22x1/2

NOTE: SOME SMALL ROUND HOLE SIZES ARE BECOMING HARDER TO PROVIDE SO THE SUGGESTED SIZE MIGHT NOT BE AVAILABLE

COMMODITY		TOP SCREEN	BOTTOM SCREEN
GRASS SEED CON'T.			
Lovegrass, Boer		30x30	50x50
Lovegrass, Lehman		1/23, 32x32	36x36
Lovegrass, Sand		1/23	6x34
Lovegrass, Weeping		1/23, 6x32	40x40, 6x40
Orchardgrass		6	6x32
Redtop		30x30, 32x32	50x50
Redtop, Timothy		6x34	50x50
Rescuegrass		1/13x1/2	1/18x1/1, 10 TRI
Rhodesgrass		1/12	6x34
Ryegrass		1/22x1/2	6x32
Sand Dropseed		32x32, 6x36	44x44
Side Oats Grama		4x24	50 x 50
Sudangrass		1/12x1/2	3/64x5/16
Sudangrass Piper		5-1/2x3/4	1/20x1/2
Sudangrass Sweet		6x3/4	1/18x1/2
Switchgrass, Blackwell		1/14, 1/22x1/2	6x22, 6x23
Timothy		1/21, 1/23 or 20x20	6x34
Wheatgrass, Intermediate ONHE		1/12x1/2	6x18, 10 Tri.
Wheatgrass, Intermediate		1/14x1/2	6x18, 10 Tri.
Wheatgrass, Western		1/14x1/2	6x20, 10 Tri.
Wheatgrass, Crested		1/18x1/2	6x30
Wheatgrass, Crested (HY)		1/14x1/2	6x24
Wheatgrass, Crested FAIRWAY		1/14x1/2	6x24

NOTE: SOME SMALL ROUND HOLE SIZES ARE BECOMING HARDER TO PROVIDE SO THE SUGGESTED SIZE MIGHT NOT BE AVAILABLE

COMMODITY		TOP SCREEN	BOTTOM SCREEN
GRAINS & OILS			
Amaranth		1/19	32x32
Barley, plump		16, 9x3/4	5x3/4, 12 Tri
Barley, thin		14, 8x3/4	1/13x1/2
Borage		17	6
Buckwheat		14	6x3/4
Canola		7, 8	1/19, 1/20
Cane		10	1/14x1/2
Chia Seed		1/14, 1/15	22x22, 6x22
Corn, White		36,38	16
Corn, Yellow Cleaning only		30, 28	16
Corn, Flint (Red)		28	17
Coffee, unhulled		28	8x3/4
Coffee, hulled		22	8x3/4
Cottonseed, acid-delinted		18	9-1/2x3/4 10x3/4
Cottonseed, mechanically delinted		20, 18	9-1/2x3/4 10x3/4
Cottonseed, undelinted		36	13x3/4
Dichondra, unhulled		1/14	6x21, 6x22
Dichondra, hulled		7	6x18
Flax, large		1/13x1/2	6
Flax, small		3x17	1/13
Flax, Golden		1/18x1/2	5-1/2
Hegari		12	1/12x1/2
Hemp (to reclaim seed)		12,13	1/16x1/2
Kenaf		8x3/4	1/14x1/2
Millet, Browntop		1/14x1/2	6x20
Millet, Cat Tail		6	3/64x5/16
Millet, Finch		3x17	4x22
Millet, Proso		8, 1/12x1/2	1/15, 1/16
Millet, Siberian		6	1/15
Milo, Maize		12	1/12x1/2, 1/13x1/2

NOTE: SOME SMALL ROUND HOLE SIZES ARE BECOMING HARDER TO PROVIDE SO THE SUGGESTED SIZE MIGHT NOT BE AVAILABLE

COMMODITY	TOP SCREEN	BOTTOM SCREEN
GRAINS & OILS CON'T.		
Oats, very large	20, 13x3/4	1/13x1/2
Oats, large	18, 11x3/4	1/14x1/2
Oats, small	16, 9x3/4	1/15x1/2
Oats, Very Plump	18, 9x3/4	1/12x1/2
Oats, Very Thin	18, 9x3/4	1/14x1/2
Oats, Mo. 0-205	16, 7x3/4	1/16x1/2, 1/18x1/2
Popcorn, Japan Hulless	17	9, 10, 6x3/4
Popcorn	18, 19	11, 12
Popcorn, Strawberry	14	6x3/4
Popcorn, Pearl	19	11, 12, 8x3/4
Quinoa (Black,White)	7	1/15, 6x24, 1/24x1/2
Rape, Dwarf	6	4x22
Rice, unhulled, long grain	12, 7x3/4	1/15x1/2, 1/16x1/2
Rice, unhulled, short grain	12, 8x3/4	1/13x1/2, 1/14x1/2
Rice, hulled	12	14x14
Rice, Wild (FROM MINNESOTA)	12	6, 1/13
Rye	12, 7x3/4	1/16x1/2
Rye, Florida Black	11	3/64x5/16
Safflower	11x3/4	6x3/4
Sesame	1/20x1/2	1/16, 6x24
Sesame, Black	3/64x5/16	1/16, 14x14
Sorgo, Atlas	10	1/12x1/2
Sorghum	10, 1/12x1/2	6x20, 1/15
Spelt (Hulled)	16	5x3/4
Spelt (Unhulled)	20	6x3/4
Sunflower, Black Oil	19	11, 12
Sunflower,	19	11, 12
Sunflower, Large Stripped	28	13, 14
Triticale	15, 9x3/4	6x3/4
Teff	24x24, 22x22	38x38
Wheat, TR ???	12	5x3/4
Wheat, plump	14, 9x3/4	5-1/2x3/4
Wheat, thin	12, 8x3/4	1/13x1/2
Wheat, Durum	16, 10x3/4	6x3/4
Wheat, Take out Wild Radish	12	5x3/4

NOTE: SOME SMALL ROUND HOLE SIZES ARE BECOMING HARDER TO PROVIDE SO THE SUGGESTED SIZE MIGHT NOT BE AVAILABLE

COMMODITY		TOP SCREEN	BOTTOM SCREEN
SMALL LEGUME SEED			
Alfalfa		1/14, 3/64x5/16	6x24
Beggarweed, hulled		1/18x1/2	6x24
Beggarweed, unhulled		12,14	6x24
Burnett		9x3/4	1/12
Clover, Alsike		1/19	6x32
Clover, Bur, hulled		1/13	6x22
Clover, Alyce		1/22x1/2	6x24
Clover, Berseem		1/16x1/2	6x20
Clover, Crimson		1/13	6x22
Clover, Button		1/18x1/2	6x24
Clover, Hop		22x22	6x38
Clover, Hubam Sweet hulled		3/64x5/16	6x24
Clover, Hubam Sweet unhulled		1/14x1/2	6x24
Clover, Lappa		3/64x5/16	6x24
Clover, Ladino		1/21, 1/22	6x32
Madrid Sweet Clover, Hulled		1/16	6x26
Clover, Persian		1/19	6 x 30
Clover, Red		3/64 x 5/16	6x22, 6x24
Clover, Sour, Melilotus Indica, hulled		1/15, 3/64x5/16	6x24
Clover, Sour, Melilotus Indica, unhulled		1/18x1/2	6x24
Clover, Sub		7	6x18
Clover, Sweet, hulled		3/64x5/16	6x24
Clover, Sweet, unhulled		1/14x1/2	6x24
Clover, White		1/20	6x32
Guar		8x3/4	1/13x1/2
Indigo, Blanket		16x16	6x26
Indigo, Carpet		16x16	6x26
Indigo, Early		1/13	6x20
Indigo, Hairy		1/13, 1/14	6x20

NOTE: SOME SMALL ROUND HOLE SIZES ARE BECOMING HARDER TO PROVIDE SO THE SUGGESTED SIZE MIGHT NOT BE AVAILABLE

COMMODITY			TOP SCREEN	BOTTOM SCREEN
SMALL LEGUME SEED CON'T.				
Lespedeza, Bicolor, hulled			1/13x1/2	6x18
Lespedeza, Bicolor unhulled			1/12x1/2	6x18
Lespedeza, Common, unhulled			3/64x5/16	1/16, 1/15
Lespedeza, Common, hulled			3/64x5/16	1/18
Lespedeza, Kobe, Marion unhulled			1/18x1/2	1/14, 1/12
Lespedeza, Kobe, hulled			3/64x5/16	1/16
Lespedeza, Korean, unhulled			3/64x5/16, 1/18x1/2	1/15, 1/16
Lespedeza, Korean, hulled			3/64x5/16	1/18
Lespedeza, Scricea, unhulled			1/18x1/2	1/15
Lespedeza, Scricea, hulled			3/64x5/16	6x26
Sanfoin, hulled			6x3/4	1/18X1/2
Sanfoin, unhulled			10x3/4	1/12x1/2
Sesbasia			9, 8	1/18x1/2
Trefoil, Birdfoot			3/64x5/16	6x24
Trefoil, Yellow or Black Medic, hulled			3/64x5/16	6x30
Trefoil, Yellow or Black Medic, unhulled			1/18x1/2	6x30

NOTE: SOME SMALL ROUND HOLE SIZES ARE BECOMING HARDER TO PROVIDE SO THE SUGGESTED SIZE MIGHT NOT BE AVAILABLE

COMMODITY		TOP SCREEN	BOTTOM SCREEN
TREE SEED			
Birch, Black		14	6
Cedar, Red		1/18X1/2	6
Fir, Douglas		15	8, 1/15x1/2
Fir, Noble		18	1/16x1/2
Fir, Balsam Dewinged		12	1/18x1/2
Juniper		22	8x3/4
Larch, Western		8	1/14, 1/22x1/2
Locust, Honey		20	12
Locust, Black		10	6
Pine, Slash		15, 16	8, 9
Pine, Long Leaf		20, 22	12
Pine, Pitch		10	1/12
Pine, Yellow		18	6-1/2x3/4
Pine, Virginia		10	1/18x1/2
Pine, Norway		9	1/13
Pine, Jack		9	1/16
Pine, Jack		12	6
Pine, Leaf Pine		11	1/12
Pine, Red		10, 6x3/4	1/18x1/2
Pine, Ponderosa		16	8, 5-1/2x3/4
Pine, Loblolly		12, 13	1/14x1/2
Pine, Lodgepole		8	1/16, 1/17
Spruce, Engleman		7	6x21
Spruce, Black		1/13	6x24
Spruce, White		1/12, 1/15x1/2	6x21, 6x22
Sweet Gum		12	1/13

NOTE: SOME SMALL ROUND HOLE SIZES ARE BECOMING HARDER TO PROVIDE SO THE SUGGESTED SIZE MIGHT NOT BE AVAILABLE

COMMODITY	TOP SCREEN	BOTTOM SCREEN
VEGETABLE AND FRUIT		
Asparagus	11, 12	9
Beet, FK ??	19	9
Beet, California	20, 19	8, 9
Beet, Garden	20, 19	8, 9
Broccoli	7	1/16, 20x20
Cabbage	6, 7	1/16, 1/17, 3/64x5/16
Carrot	6, 5-1/2	6x26, 6X30
Carrott, ROP ??\	8	6x24
Cauliflower	6	1/17, 1/18
Celery	1/16, 1/17	28x28, 30x30
Cucumber	16, 17	8, 9
Chicory	1/14	22x22
Cosmos	1/14x1/2	1/20
Crambe (Seakale)	13	5.5
Grape (Dry)	13	5x3/4
Lettuce	3/64X5/16	22x22, 24x24
Lettuce , Lehuce	6X20	1/18, 22x22
Lettuce, Tango	6X18	20x20
Lettuce, Black Simpson	6	24x24
Muskmelon	16	9
Okra	14, 15	8x3/4, 9x3/4
Onion	8, 9	1/14, 1/15
Onion, Valdalia	9	1/13
Oregano Leaves	36	28x28
Pepper	16, 18	6x3/4, 8
Pumpkin	28	18
Radish	9	1/13, 1/14
Rutabaga	6	1/14, 1/16
Spinach	8	1/15
Squash	32, 34, 36	23, 24
Squash, Butternut	28	16, 18
Strawberry Seed(PULPLESS)	16x16	28x28
Tomato	10, 11	1/12, 6
Turnip	1/16	1/20
Watermelon	24	16
Watermelon, Sugarbaby	20, 12x3/4	12
Watermelon, Garrison	26, 13x3/4	19

NOTE: SOME SMALL ROUND HOLE SIZES ARE BECOMING HARDER TO PROVIDE SO THE SUGGESTED SIZE MIGHT NOT BE AVAILABLE

COMMODITY		TOP SCREEN	BOTTOM SCREEN
SPICE SEED			
Basil		6	6x24
Basil, Sacred		1/18, 6x20	6x20
Clove		32, 16x3/4	
Cumin		10	6x28
Chicory		1/12, 1/16x1/2	22x22, 6x26
Dill		10	1/18
Fenugreek		6x3/4	1/14x1/2
Mustard, Dark		1/15	6x22
Mustard, Yellow		7, 8	3/64x5/16, 1/16
Mustard, White		7	1/16x1/2, 16x16
Mustard, Brown		5-1/2	1/19, 20x22
Mustard, Tame Yellow		7	1/14
Pepper, Whole Black		16	7, 6x3/4
Summer Savory		1/18	6x28
Sage,		8	6x20
Thyme		12X12	32x32

NOTE: SOME SMALL ROUND HOLE SIZES ARE BECOMING HARDER TO PROVIDE SO THE SUGGESTED SIZE MIGHT NOT BE AVAILABLE

COMMODITY		TOP SCREEN	BOTTOM SCREEN
FLOWER SEED			
Alussum		1/20	40x40
Aster		7,8	6x28
Blackeyed Susan		18x18	6x36
Borage		17	6
Carnation		1/13, 1/14	1/21
Calendula		12	6
Cornflower		9	1/21
Cosmos		1/14x1/2	1/20
Culvers Root		50X50	None
Dianthus		6	1/21
Dotted Horsemint		22X22	28X28
Daisy		1/18X1/2	6x26
Endive		1/14	6x28
Gaillardia		14	1/16
Grayheaded Cone Flower		7	26X26
Hairy Beard Tongue		28X28	50X50
Lavender, buds		11, 10	6x18
Larkspur		7	1/16
Marigold		1/15x1/2	6x34
Meadowfoam		11	1/14
Mountain Mint		22X22	28X28
NE Aster		18X18	28X28
Oxpetalum		10	1/13
Prairie Coreopsis		10	16X16
Prairie Dock		22	10
Petunia		1/23	60X60, 50X50
Pansy		1/15	6x26
Potulaca		1/23	40x40
Rhlox		1/12	6x26
Scabuis			3/64x5/16
Silky Aster		6 x 22	26X26
Smooth Blue Aster		16X16	26X26
Snapdragon		1/23	34x34
Talinum		1/23	6x40
Tall Coreopsis		9	16X16
Wahlenbergia		1/16	6x28
Western Sunflower		8	22X22
Whorled Rosinweed		18	9
Zinnia		21	1/14

COMMODITY		TOP SCREEN	BOTTOM SCREEN
WILDFLOWER & NATIVE GRASS			
Acjinophila		12	6
Arburicola		10	5-1/2
Blue Stem, Big (from Colorado)		18	1/18x1/2
Blue Stem, Little (from Louisiana)		18	1/18x1/2
Blue Stem, Little (from Kentucky)		15	6x24
Blue Stem, Little (from Nebraska)		20	1/16x1/2
Blue Stem, Little (from Colorado)		20	1/18x1/2
(Schizyachyivium Scopavium)			
Blue Gamma (from Colorado)		12	6x28
(Bouteloua Gracilis)			
Broadleaf Lotus		9	1/20x1/2
Canadian Wild Rye		16	1/24x1/2
(Elymus Canadensis)			
Caterpillar Plant		6	1/23
Common Madia		7	1/23
Compass Plant (from Missouri)		24	16
Coneflower		11, 10	1/14x1/2, 1/18x1/2
Deerbrush		All Air	All Air
Eastern Gamma Grass		17, 18	8x3/4
Jewel Flower		5-1/2	1/21
Indian Paintbrush (from Missouri)		24x24, 22x22	6x40
Indian Grass (from Kentucky)		12	6x24
Lupine, Sickle Keel		13	9
Lupine, Bi-Color		9	5-1/2
Lupine, Silver		13	9
Lupine, Moot		9	5-1/2
Little Cone Sunflower		15	8
Maximillion Sunflower		6, 7	1/17, 6x26
Meadowfoam		11	1/14
Mules Ear		9	1/24x1/2
Needle & Thread (from Colorado)		10	6x26
Pear Everlasting		Bad Sample	
Smooth Cordgrass	1/12x1/2	20	Blank

NOTE: SOME SMALL ROUND HOLE SIZES ARE BECOMING HARDER TO PROVIDE SO THE SUGGESTED SIZE MIGHT NOT BE AVAILABLE

COMMODITY		TOP SCREEN	BOTTOM SCREEN
SPECIALTY CROPS			
Tobacco Seed		26x26	50x50, 60x60

CLIPPER SCREEN SIZES - JANUARY 15, 2021

ROUND HOLE

PART NUMBER	FRACTIONS (INCH)	HOLE SIZE IN 64TH	HOLE SIZE IN THOUSANDS	HOLE SIZE IN MM	STANDARD OR ADDITIONAL PRICE	METAL GAUGE
F91530125	1/25	2.56	.040	1.01	NOT AVAILABLE	
F91530124	1/24	2.67	.041	1.05	NOT AVAILABLE	
F91530123	1/23	2.78	.043	1.10	DOUBLE STANDARD	
F91530122	1/22	2.91	.045	1.15	DOUBLE STANDARD	
F91530121	1/21	3.05	.047	1.19	STANDARD	
F91530120	1/20	3.2	.050	1.27	STANDARD	
F91530119	1/19	3.37	.052	1.33	STANDARD	
F91530118	1/18	3.56	.055	1.41	STANDARD	
F91530117	1/17	3.76	.058	1.49	STANDARD	
F91530116	1/16	4	.062	1.58	STANDARD	
F91530115	1/15	4.27	.066	1.69	STANDARD	
F91530114	1/14	4.57	.071	1.81	STANDARD	
F91530113	1/13	5	.076	1.95	STANDARD	
F91530112	1/12	5.33	.083	2.11	STANDARD	
F91530512		5-1/2	.086	2.18	STANDARD	
F91530600		6	.094	2.38	STANDARD	
F91530612		6-1/2	.102	2.57	STANDARD	
F91530700		7	.109	2.77	STANDARD	
F91530712		7-1/2	.117	2.97	STANDARD	
F91530800		8	.125	3.17	STANDARD	
F91530812		8-1/2	.132	3.37	STANDARD	
F91530900		9	.141	3.57	STANDARD	
F91530912		9-1/2	.149	3.77	STANDARD	
F91531000		10	.156	3.96	STANDARD	
F91531012		10-1/2	.164	4.16	STANDARD	
F91531100		11	.172	4.36	STANDARD	
F91531112		11-1/2	.180	4.56	STANDARD	
F91531200		12	.187	4.76	STANDARD	
F91531212		12-1/2	.195	4.91	STANDARD	
F91531300		13	.203	5.15	STANDARD	
F91531312		13-1/2	.211	5.35	STANDARD	
F91531400		14	.219	5.55	STANDARD	
F91531412		14-1/2	.227	5.75	STANDARD	
F91531500		15	.234	5.95	STANDARD	
F91531512		15-1/2	.242	6.15	STANDARD	
F91531600		16	.250	6.35	STANDARD	
F91531612		16-1/2	.258	6.54	STANDARD	
F91531700		17	.266	6.74	STANDARD	
F91531712		17-1/2	.274	6.94	STANDARD	

MOST STANDARD SCREEN SHEET SIZES ARE AS FOLLOWS

53-1/4" x 26" or 53-1/4" x 26-3/4" for 8 wide machines

41-1/4" x 26" or 41-1/4" x 26-3/4" for 9 wide machines

33-1/4" x 33-1/4" for 7 wide machines and Eclipse 334

27-1/4" x 33-1/4" for 6 wide machines

24-1/4" x 22" for M2B machines, AGM 224 and Eclipse 324

NOTE: SOME METERIC ROUND HOLES ARE NOW AVAILABLE, SEE ADDITIONAL ROUND HOLE SECTION

NOTE: ON SMALL ROUND AND SLOTTED HOLES, A 53-1/4" X 26 " SHEET WILL BE CUT DOWN TO MAKE A SMALLER SCREEN SIZE

ROUND HOLE CONTINUED

PART NUMBER	FRACTIONS (INCH)	HOLE SIZE IN 64TH	HOLE SIZE IN THOUSANDS	HOLE SIZE IN MM	STANDARD OR ADDITIONAL PRICE	METAL GAUGE
F91531800		18	.281	7.14	STANDARD	
F91531812		18-1/2	.289	7.34	STANDARD	
F91531900		19	.297	7.54	STANDARD	
F91531912		19-1/2	.305	7.73	STANDARD	
F91532000		20	.312	7.93	STANDARD	
F91532012		20-1/2	.320	8.13	STANDARD	
F91532100		21	.328	8.33	STANDARD	
F91532112		21-1/2	.336	8.53	STANDARD	
F91532200		22	.344	8.73	STANDARD	
F91532212		22-1/2	.352	8.92	STANDARD	
F91532300		23	.359	9.12	STANDARD	
F91532400		24	.375	9.52	STANDARD	
F91532500		25	.391	9.92	STANDARD	
F91532600		26	.406	10.31	STANDARD	
F91532700		27	.422	10.71	STANDARD	
F91532800		28	.437	11.11	STANDARD	
F91532900		29	.453	11.51	STANDARD	
F91533000		30	.469	11.9	STANDARD	
F91533200		32	.500	12.7	STANDARD	
F91533400		34	.531	13.49	STANDARD	
F91533600		36	.562	14.28	STANDARD	
F91533800		38	.593	15.08	STANDARD	
F91534000		40	.625	15.87	STANDARD	
F91534200		42	.657	16.67	STANDARD	
F91534400		44	.687	17.47	STANDARD	
F91534600		46	.718	18.26	STANDARD	
F91534800		48	.750	19.05	STANDARD	
F91535400		54	.846	21.39	STANDARD	
F91535600		56	.875		STANDARD	

NOTE: SOME METERIC ROUND HOLES ARE NOW AVAILABLE, SEE ADDITIONAL ROUND HOLE SECTION

MOST STANDARD SCREEN SHEET SIZES ARE AS FOLLOWS

53-1/4" x 26" or 53-1/4" x 26-3/4" for 8 wide machines

41-1/4" x 26" or 41-1/4" x 26-3/4" for 9 wide machines

33-1/4" x 33-1/4" for 7 wide machines and Eclipse 334

27-1/4" x 33-1/4" for 6 wide machines

24-1/4" x 22" for M2B machines, AGM 224 and Eclipse 324

OBLONG (SLOTTED HOLES)

PART NUMBER	FRACTIONS (INCH)	HOLE SIZE IN 64TH	HOLE SIZE IN THOUSANDS	HOLE SIZE IN MM	STANDARD OR ADDITIONAL PRICE	METAL GAUGE
F91560124	1/24x1/2	2.67	.041	1.05 X 12.70	DOUBLE STANDARD	
F91560122	1/22 x1/2	2.91	.045	1.15 X 12.70	DOUBLE STANDARD	
F91561122	1/22 x1/2 DIAC	2.91	.045	1.15 X 12.70	DOUBLE STANDARD	
F91550364	3/64 x 5/16	3.00	.047	1.19 X 7.98	DOUBLE STANDARD	
F91560120	1/20 x 1/2	3.20	.050	1.27 X 12.70	DOUBLE STANDARD	
F91560118	1/18 x 1/2	3.56	.055	1.40 X 12.70	STANDARD	
F91570118	1/18 x 3/4	3.56	.055	1.40 X 19.05	DOUBLE STANDARD	
F91560117	1/17 x 1/2	3.76	.058	1.49 X 12.70	STANDARD	
F91540116	1/16 x 1/4	4.00	.062	1.58 X 6.35	DOUBLE STANDARD	
F91560116	1/16 x 1/2	4.00	.062	1.58 X 12.70	STANDARD	
F91560115	1/15 x 1/2	4.27	.066	1.69 X 12.70	STANDARD	
F91540114	1/14 x 1/4	4.57	.071	1.81 X 6.35	DOUBLE STANDARD	
F91560114	1/14 x 1/2	4.57	.071	1.81 X 12.70	STANDARD	
F91560113	1/13 x 1/2	5.00	.076	1.93 X 12.70	STANDARD	
F91560112	1/12 x 1/2	5.33	.083	2.11 X 12.70	STANDARD	
F91570500	5 x 3/4		.078	1.98 X 19.05	STANDARD	
F91570512	5-1/2 x 3/4		.086	2.18 X 19.05	STANDARD	
F91570600	6 x 3/4		.094	2.38 X 19.05	STANDARD	
F91570612	6-1/2 x 3/4		.102	2.57 X 19.05	STANDARD	
F91570700	7 x 3/4		.109	2.77 X 19.05	STANDARD	
F91570712	7-1/2 x 3/4		.117	2.97 X 19.05	STANDARD	
F91570800	8 x 3/4		.125	3.17 X 19.05	STANDARD	
F91570812	8-1/2 x 3/4		.132	3.35 X 19.05	STANDARD	
F91570900	9 x 3/4		.141	3.57 X 19.05	STANDARD	
F91570912	9-1/2 x 3/4		.149	3.78 X 19.05	STANDARD	
F91571000	10 x 3/4		.156	3.96 X 19.05	STANDARD	
F91571012	10-1/2 x 3/4		.164	4.16 X 19.05	STANDARD	
F91571100	11 x 3/4		.172	4.36 X 19.05	STANDARD	
F91571112	11-1/2 x 3/4		.180	4.56X 19.05	STANDARD	
F91571200	12 x 3/4		.187	4.76 X 19.05	STANDARD	
F91571212	12-1/2 x 3/4		.195	4.96 X 19.05	STANDARD	
F91571300	13 x 3/4		.203	5.15 X 19.05	STANDARD	
F91571312	13-1/2 x 3/4		.211	5.35 X 19.05	STANDARD	
F91571400	14 x 3/4		.219	5.55X 19.05	STANDARD	
F91571412	14-1/2 x 3/4		.227	5.75 X 19.05	STANDARD	
F91571500	15 x 3/4		.234	5.95 X 19.05	STANDARD	
F91571600	16 x 3/4		.242	6.35 X 19.05	STANDARD	
F91571700	17 x 3/4		.266	6.74 X 19.05	STANDARD	
F91571800	18 x 3/4		.281	7.14 X 19.05	STANDARD	
F91571900	19 x 3/4		.297	7.54X 19.05	STANDARD	
F91572000	20 x 3/4		.312	7.93 X 19.05	STANDARD	
F91572200	22 x 3/4		.344	8.73 X 19.05	STANDARD	
F91572400	24 x 3/4		.375	9.53 X 19.05	STANDARD	

NOTE: ON SMALL ROUND AND SLOTTED HOLES, A 53-1/4" X 26 " SHEET WILL BE CUT DOWN TO MAKE A SMALLER SCREEN SIZE

F91570525	5-1/4 X 3/4		.082	2.08 X 19.05	DOUBLE STANDARD	
F91571310	13 x 1"		.203	5.15 X 25.40	DOUBLE STANDARD	
F91572012	20-1/2 x 3/4		.320	8.13 X 19.05	DOUBLE STANDARD	
F91573201	32 x 1		0.5	12.75 X 25.40	DOUBLE STANDARD	

OBLONG CROSS (SLOTTED HOLES)

(CROSS SLOTS MEANS THAT THE SLOTS GO ACROSS THE FLOW OF THE PRODUCT)

PART NUMBER	FRACTIONS (INCH)	CROSS SLOT SIZE IN 64TH	SLOT WIDTH IN THOUSANDS	SLOT SIZE IN IN MM	STANDARD OR ADDITIONAL PRICE	METAL GAUGE
F91520512		5-1/2 X 3/4	0.86	2.18 X 19.05	STANDARD	
F91520634		6 X 3/4	.94	2.38 X 19.05	STANDARD	
F91520612		6-1/2 X 3/4	.102	2.57 X 19.05	STANDARD	
F91520734		7 X 3/4	.109	2.77 X 19.05	STANDARD	
F91520712		7-1/2 X 3/4	.117	2.97 X 19.05	STANDARD	
F91520834		8 X 3/4	.125	3.17 X 19.05	STANDARD	
F91520812		8-1/2 X 3/4	0.133	3.37 X 19.05	STANDARD	
F91520934		9 X 3/4	.141	3.57 X 19.05	STANDARD	
F91520912		9-1/2 X 3/4	.149	3.78 X 19.05	STANDARD	
F91521034		10 X 3/4	.156	3.96 X 19.05	STANDARD	
F91521012		10-1/2 X 3/4	.164	4.16 X 19.05	STANDARD	
F91521134		11 X 3/4	.172	4.36 X 19.05	STANDARD	
F91521112	0	11-1/2 X 3/4	.180	4.56 X 19.05	STANDARD	
F91521234		12 X 3/4	.187	4.76 X 19.05	STANDARD	
F91521212		12-1/2 X 3/4	.195	4.95 X 19.05	STANDARD	
F91521334		13 X 3/4	.203	5.15 X 19.05	STANDARD	
F91521312		13-1/2 X 3/4	.211	5.35 X 19.05	STANDARD	
F91521434		14 X 3/4	.219	5.55 X 19.05	STANDARD	
F91521412		14-1/2 X 3/4	.227	5.75 X 19.05	STANDARD	
F91521534		15 X 3/4	.234	5.95 X 19.05	STANDARD	
F91521512		15-1/2 X 3/4	.242	6.15 X 19.05	STANDARD	
F91521634		16 X 3/4	.250	6.35 X 19.05	STANDARD	
F91521612		16-1/2 X 3/4	.258	6.55 X 19.05	STANDARD	
F91521834		18 X 3/4	.281	7.15 X 19.05	STANDARD	

ADDITIONAL SLOTTED HOLE PUNCHES

PART NUMBER	FRACTIONS (INCH)	HOLE SIZE IN 64TH	HOLE SIZE IN THOUSANDS	HOLE SIZE IN MM	STANDARD OR ADDITIONAL PRICE	METAL GAUGE
		10/64 X 1	.156	3.96 X 25.40	CALL FOR QUOTE	
		28/64 X 3/4	.437	11.11 X 19.05	CALL FOR QUOTE	
		32/44 X 1	.500	12.75 X 19.05	CALL FOR QUOTE	
		35/64 X 15/16	.546	13.89 X 23.80	CALL FOR QUOTE	
		40/64 X 1-3/8	.625	15.87 X 34.92	CALL FOR QUOTE	
		48/64 X 1-1/2	.750	19.12 X 38.10	CALL FOR QUOTE	

MOST STANDARD SCREEN SHEET SIZES ARE AS FOLLOWS

- 53-1/4" x 26" or 53-1/4" x 26-3/4" for 8 wide machines
- 41-1/4" x 26" or 41-1/4" x 26-3/4" for 9 wide machines
- 33-1/4" x 33-1/4" for 7 wide machines and Eclipse 334
- 27-1/4" x 33-1/4" for 6 wide machines
- 24-1/4" x 22" for M2B machines, AGM 224 and Eclipse 324

HERRINGBONE (SLOTTED HOLES)
(SLOTS GOES AT A DIAGONAL ACROSS THE FLOW OF THE PRODUCT)

PART NUMBER	FRACTIONS (INCH)	SLOT SIZE IN 64TH	WIDTH IN THOUSANDS	SIZE IN IN MM	STANDARD OR ADDITIONAL PRICE	METAL GAUGE
F91580900		9 X 1-1/4	.141 X 1.250	3.57 X 31.75	STANDARD	
F91581000		10 X 1-1/4	.156 X 1.250	3.96 X 31.75	STANDARD	
F91581012		10-1/2 X 1-1/4	.164 X 1.250	4.16 X 31.75	STANDARD	
F91581100		11 X 1-1/4	.172 X 1.250	4.36 X 31.75	STANDARD	
F91581112		11-1/2 X 1-1/4	.180 X 1.250	4.56 X 31.75	STANDARD	
F91581200		12 X 1-1/4	.188 X 1.250	4.76 X 31.75	STANDARD	
F91581400		14 X 1-1/4	.219 X 1.250	5.55 X 31.75	STANDARD	
F91581500		15 X 1-1/4	.234 X 1.250	5.95 X 31.75	STANDARD	
F91581600		16 X 1-1/4	.250 X 1.250	6.35 X 31.75	STANDARD	
F91581800		18 X 1-1/4	.281 X 1.250	7.15 X 31.75	STANDARD	

MOST STANDARD SCREEN SHEET SIZES ARE AS FOLLOWS

- 53-1/4" x 26" or 53-1/4" x 26-3/4" for 8 wide machines
- 41-1/4" x 26" or 41-1/4" x 26-3/4" for 9 wide machines
- 33-1/4" x 33-1/4" for 7 wide machines and Eclipse 334
- 27-1/4" x 33-1/4" for 6 wide machines
- 24-1/4" x 22-1/4" for M2B machines, AGM 224 and Eclipse 324

TRIANGLE HOLE
(MEASURED ON THE SIDE OF TRIANGLE)

PART NUMBER	FRACTIONS (INCH)	SIZE IN THOUSANDS	SIZE IN IN MM	STANDARD OR ADDITIONAL PRICE	METAL GAUGE
F91511064		10 TRIANGLE	3.57	STANDARD	
F91511264		12 TRIANGLE	4.76	DOUBLE STANDARD	

WE ARE CONTINUING TO BUY PUNCHES FOR HEAVIER GAUGE MATERIAL
AND DIFFERENT HOLE SIZES. CALL FOR AVAILABILITY

**RECTANGULAR WIRE MESH
STAINLESS STEEL MATERIAL**

PART NUMBER	SIZE	APPROXIMATE OPENING SIZE	ROLL WIDTH
F91210317	3 X 17	.045 X .297	26"
F91210414	4 X 14	.055 X .220	26"
F91210422	4 X 22	.032X .226	26"
F91210424	4 X 24	.028 X .226	26"
F91210426	4 X 26	.024 X .228	26"
F91210428	4 X 28	.022 X .228	26"
F91210618	6 X 18	.041 X .141	26"
F91210620	6 X 20	.035 X .141	26"
F91210621	6 X 21	.033 X .141	26"
F91210622	6 X 22	.031X .141	26"
F91210623	6 X 23	.029 X .141	26"
F91210624	6 X 24	.0275 X .141	26"
F91210625	6 X 25	.026 X .142	26"
F91210626	6 X 26	.0245 X .144	26"
F91210628	6 X 28	.022 X .145	26"
F91210630	6 X 30	.020 X .147	26"
F91210632	6 X 32	.019 X .147	26"
F91210634	6 X 34	.018 X .147	26"
F91210636	6 X 36	.0165 X .147	26"
F91210638	6 X 38	.015 X .147	26"
F91210640	6 X 40	.014 X .147	26"
F91210642	6 X 42	.013 X .147	26"
F91212022	20 X 22	.038 X .330	26"

**SQUARE WIRE MESH
STAINLESS STEEL MATERIAL**

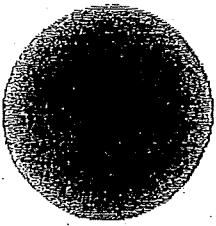
PART NUMBER	SIZE	WIRE SIZE	Roll Width
F91211414	14 MESH		42" or 48"
F91211616	16 MESH		42" or 48"
F91211818	18 MESH		42" or 48"
F91212020	20 MESH		42" or 48"
F91212424	24 MESH		42" or 48"
F91212828	28 MESH		42" or 48"
F91213636	36 MESH		42" or 48"
F91213838	38 MESH		42" or 48"
F91214444	44 MESH		42" or 48"
F91215050	50 MESH		42" or 48"
F91216060	60 MESH		42" or 48"

F91211212	12 MESH		60"
F91212222	22 MESH		60"
F91212626	26 MESH		60"
F91213030	30 MESH		60"
F91213232	32 MESH		60"
F91213434	34 MESH		60"
F91214040	40 MESH		60"

A Few Typical Styles and Screen Perforation Sizes.

Notice: Openings illustrated are not printed to actual scale

ROUND



36



22



12



6



1/12

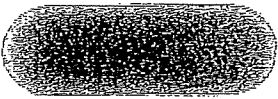
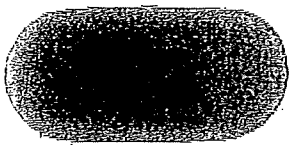


1/18



1/25

OBLONG



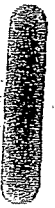
24 x 3/4

16 x 3/4

1/12 x 1/2

1/16 x 1/4

OBLONG



CROSS



TRIANGLE



10 x 3/4